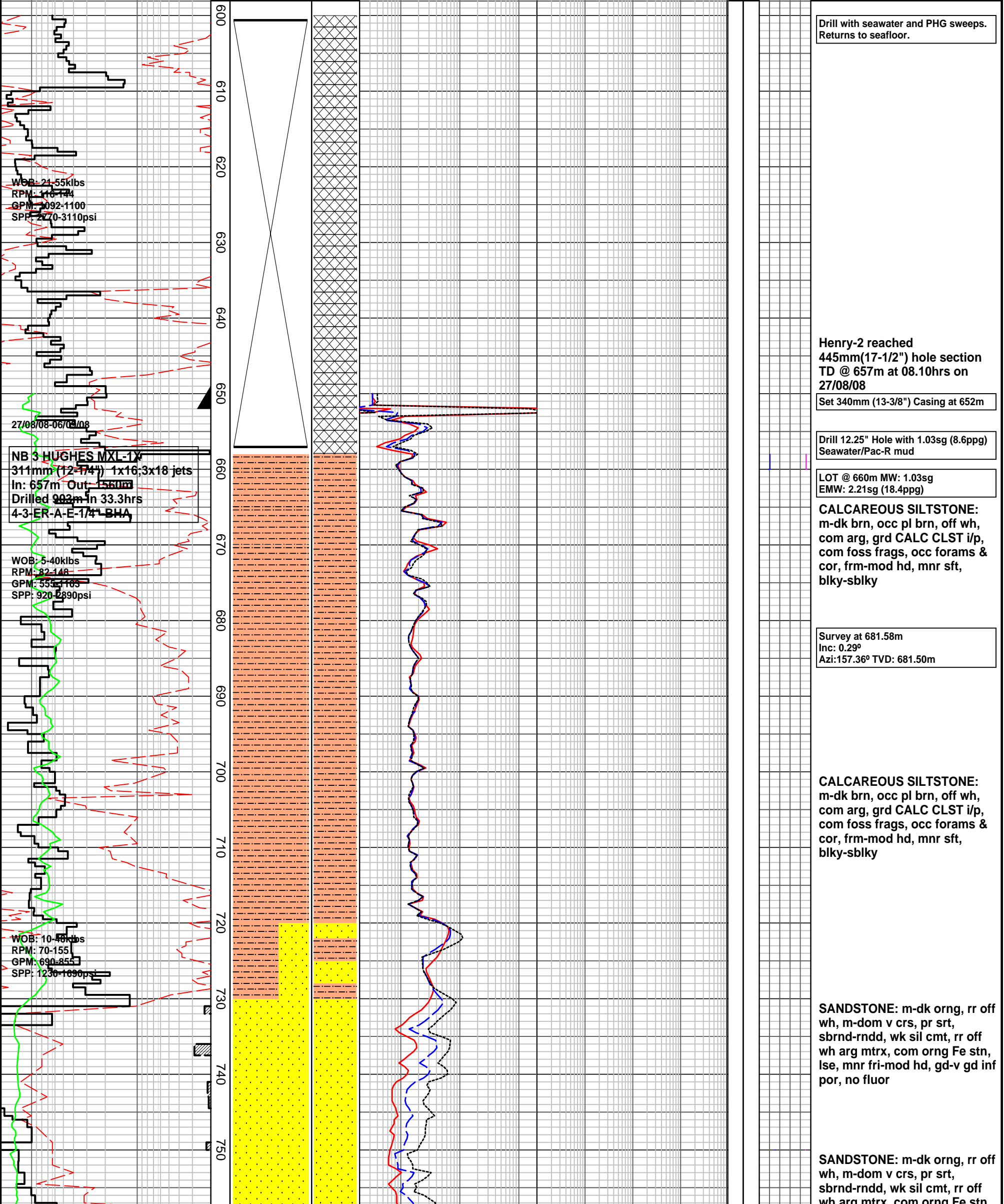


HENRY-2 FORMATION EVALUATION LOG

WOB 10 20 30 40 kibf ROP	MD meters 500	LITHOLOGY %	INTERPRETED LITHOLOGY	RESISTIVITY			CHROMATOGRAPH				DIRECT FLUORESCENCE	CUT FLUORESCENCE	REMARKS		
				Resistivity (shallow)			Total Gas								
				2	20	200	1	10	100	1000				Calcite	Dolomite
				ohm.m			unit							0	100
Gamma 20 m/hr	200			Resistivity (medium)			Methane				PFG	PFG			
				Resistivity (deep)			Ethane								
				2	20	200	Propane								
				ohm.m			i-Butane								
API 50 100 150 200				Resistivity (deep)			n-Butane								
				Resistivity (deep)			i-Pentane								
				2	20	200	n-Pentane								
				ohm.m			ppm								
												100 1000 10000 100000			

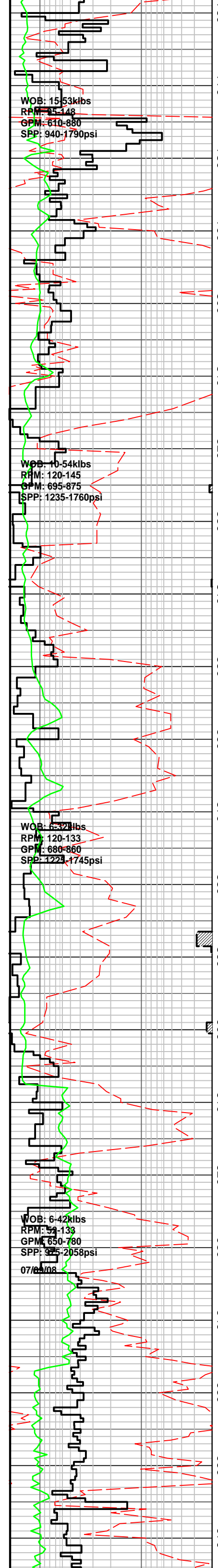


WOB: 21-55kibs
 RPM: 116-144
 GPM: 992-1100
 SPP: 470-3110psi

27/08/08-06/09/08
NB 3 HUGHES MXL-1X
 311mm (12-1/4") 1x16,3x18 jets
 In: 657m Out: 560m
 Drilled 902m in 33.3hrs
 4-3-ER-A-E-1/4" BHA

WOB: 5-40kibs
 RPM: 82-148
 GPM: 553-103
 SPP: 920-2890psi

WOB: 10-48kibs
 RPM: 70-155
 GPM: 690-855
 SPP: 1230-1890psi



lse, mnr fri-mod hd, gd-v gd in por, no fluor

Survey at 768.28m
Inc: 0.83°
Azi: 157.79° TVD: 768.20m

SILTSTONE: pl-m grn, pl gy, gy grn, off wh, arg, mnr glauc gr, rr pyr nods, frm-mod hd, disp i/p, sbblky, mnr amor

MW: 1.19 FV: 75 PV: 21 YP: 31
GELS: 9/15/21 SOL: 5.22
pH: 8.5 Ck: 8.5 CL: 66000

SANDSTONE: off wh-pl gy, clr-trnsl, crs-v crs, m i/p, mod srt, sbang-rnidd, wk sil cmt, occ off wh arg mtrx, occ pyr nods, lse gr, mnr fri, fr-gd inf por, no fluor

SANDSTONE: off wh-pl gy, clr-trnsl, crs-v crs, m i/p, mod srt, sbang-rnidd, wk sil cmt, occ off wh arg mtrx, occ pyr nods, lse grs, mnr fri, fr-gd inf por, no fluor

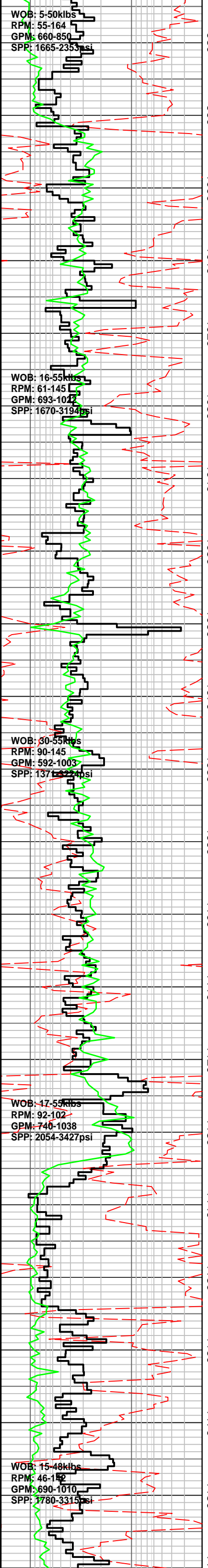
SANDSTONE: off wh-pl gy, clr-trnsl, crs-v crs, m i/p, mod srt, sbang-rnidd, wk sil cmt, occ off wh arg mtrx, occ pyr nods, lse grs, mnr fri, fr-gd inf por, no fluor

Survey at 883.67m@
Inc: 3.87°
Azi: 140.62° TVD: 883.50m

SANDSTONE: lt brnsh gy i/p, clr-trnsl, f- crs, pr srt, sbang-sbrnidd, nil cmt, rr lt brnsh gy arg mtrx, rr nod pyr, tr mic, tr liths, pred lse qtz grs, gd inf por, no fluor

Displace Hole with 1.19sg (9.9ppg)
KCL/Glycol mud

SANDSTONE: lt brnsh gy i/p, clr-trnsl, f- crs, pr srt, sbang-sbrnidd, nil cmt, rr lt brnsh gy arg mtrx, rr nod pyr, tr mic, tr liths, pred lse qtz gr, gd inf por, no fluor



SANDSTONE: lt brnsh gy i/p, clr-trnsl, f- crs, pr srt, sbang-sbrndd, nil cmt, rr lt brnsh gy arg mtrx, rr nod pyr, tr mic, tr liths, pred lse qtz gr, gd inf por, no fluor

Survey at 998.24m
Inc: 13.64°
Azi: 148.11° TVD: 996.90m

SILTSTONE: m brn, m brnsh gy, arg, loc vf aren, tr f carb spks, tr vf glauc, sft-frm, disp i/p, sblky

SILTSTONE: m brn, m brnsh gy, arg, loc vf aren, mnr carb spks, tr vf glauc, sft-frm, sblky

SANDSTONE: off wh, lt brnsh gy, clr-trnsl, f-m gr, tr crs, pr srt, sbang-sbrndd, mnr wk calc cmt, mnr lt brnsh gy arg mtrx, tr liths, tr carb spks, p-fr inf por, no fluor

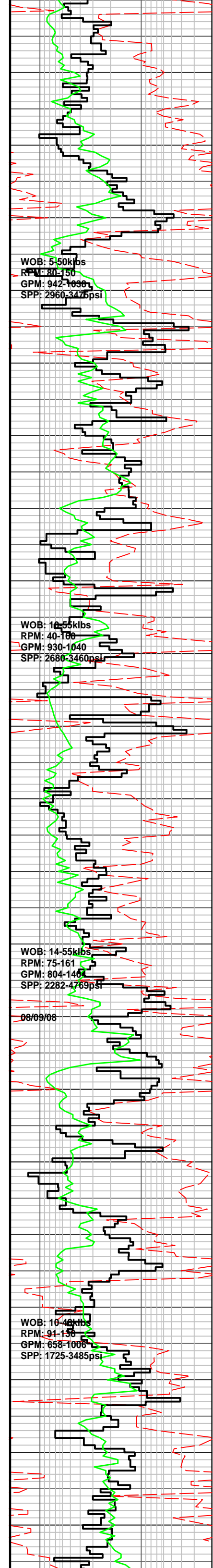
SANDSTONE: off wh, lt brnsh gy, clr-trnsl, f-m gr, tr crs, pr srt, sbang-sbrndd, mnr wk calc cmt, mnr lt brnsh gy arg mtrx, tr liths, tr carb spks, p-fr inf por, no fluor

Survey at 1112.80m
Inc: 24.41°
Azi: 135.23° TVD: 1104.90m

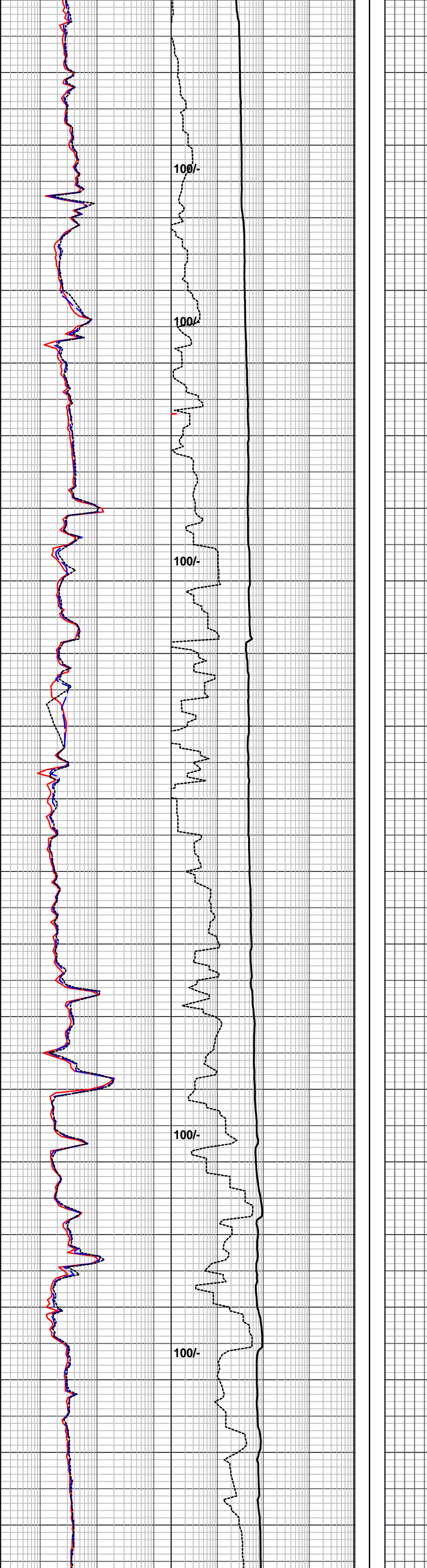
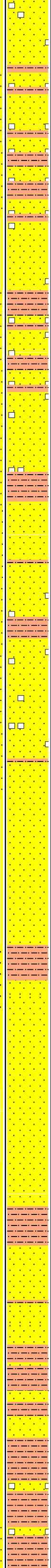
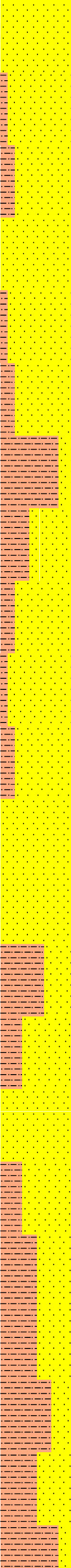
SANDSTONE: lt gy, lt brnsh gy, grnsh gy, clr-trnsl, vf-f gr, rr m-crs, sbang-sbrndd, pr srt, rr sil cmt, com nod pyr, tr liths, fri-mod hd vf agg, lse-m crs gr, pr inf por, no fluor

SANDSTONE: lt gy, lt brnsh gy, grnsh gy, clr-trnsl, vf-f gr, rr m-crs, sbang-sbrndd, pr srt, rr sil cmt, com nod pyr, tr liths, fri-mod hd vf agg, lse-m crs gr, pr inf por, no fluor

SANDSTONE: lt gy, lt brnsh gy, grnsh gy, clr-trnsl, vf-f gr, rr m-crs, sbang-sbrndd, pr srt, rr sil cmt, com nod pyr, tr liths, fri-mod hd vf agg,



90
1200
1210
1220
1230
1240
1250
1260
1270
1280
1290
1300
1310
1320
1330
1340
1350
1360
1370
1380
1390
1400



Ise-m crs gr, pr inf por, no fluor

Survey at 1198.94m
Inc: 28.27°
Azi: 128.23° TVD: 1182.00m

SILTSTONE: m-dk brn gy, arg, mnr lith, disp-v sft, occ frm, amor, occ sblky

SANDSTONE: lt gy, lt brnsh gy, grnsh gy, clr-trnsl, vf-f gr, rr m-crs, sbang-sbrndd, pr srt, rr sil cmt, com nod pyr, tr liths, fri-mod hd vf agg, lse-m crs gr, pr inf por, no fluor

SILTSTONE: m-dom dk brn, mnr brn gy, arg i/p, mnr mic, occ carb spks & frags, v sft-disp, amor, sblky i/p

Survey at 1257.97m
Inc: 31.15°
Azi: 125.30° TVD: 1233.20m

SANDSTONE: mnr pl brn-pl gy, clr-trnsl, f-m, mnr crs, mod srt, sbang-sbrndd, wk sil cmt, mnr off wh arg mtrx, com pyr nods, lse cln gr, mnr fri, fr inf por, pr vis por, no fluor

MW: 1.19 FV: 75 PV: 21 YP: 31
GELS: 9/15/21 SOL: 5.22
pH: 8.5 Ck: 0.5 CL: 66000

SANDSTONE: off wh, clr-trnsl, f-crs, mnr v crs, mod srt, sbang-sbrndd, wk sil cmt, mnr off wh arg mtrx, rr pyr nods, lse cln gr, mnr fri, fr inf por, pr vis por, no fluor

SILTSTONE: m-brnsh gy, mnr dk brn gy, arg i/p, rr carb spks, sft-frm, sblky-blky

SANDSTONE: lt gy, off wh, clr-trnsl, f-m gr, mod srt, sbang-sbrndd, wk calc & sil cmt, mnr lt gy-off wh arg mtrx, mnr nod pyr, tr f gr glauc, fri f gr agg, fr inf por, no fluor

Survey at 1374.02m
Inc: 39.86°
Azi: 112.30° TVD: 1326.70m

SILTSTONE: m gy, arg, vf aren, mnr nod pyr, tr liths, disp i/p, sblky-blky

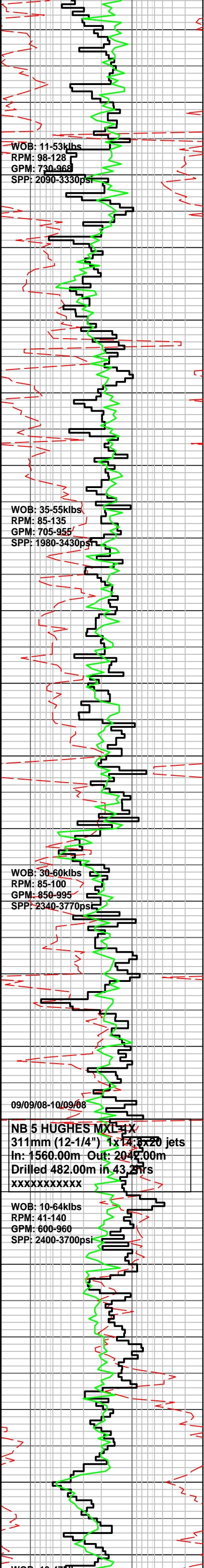
WOB: 5-50klbs
RPM: 80-150
GPM: 942-1038
SPP: 2960-3475psi

WOB: 10-55klbs
RPM: 40-180
GPM: 930-1040
SPP: 2680-3460psi

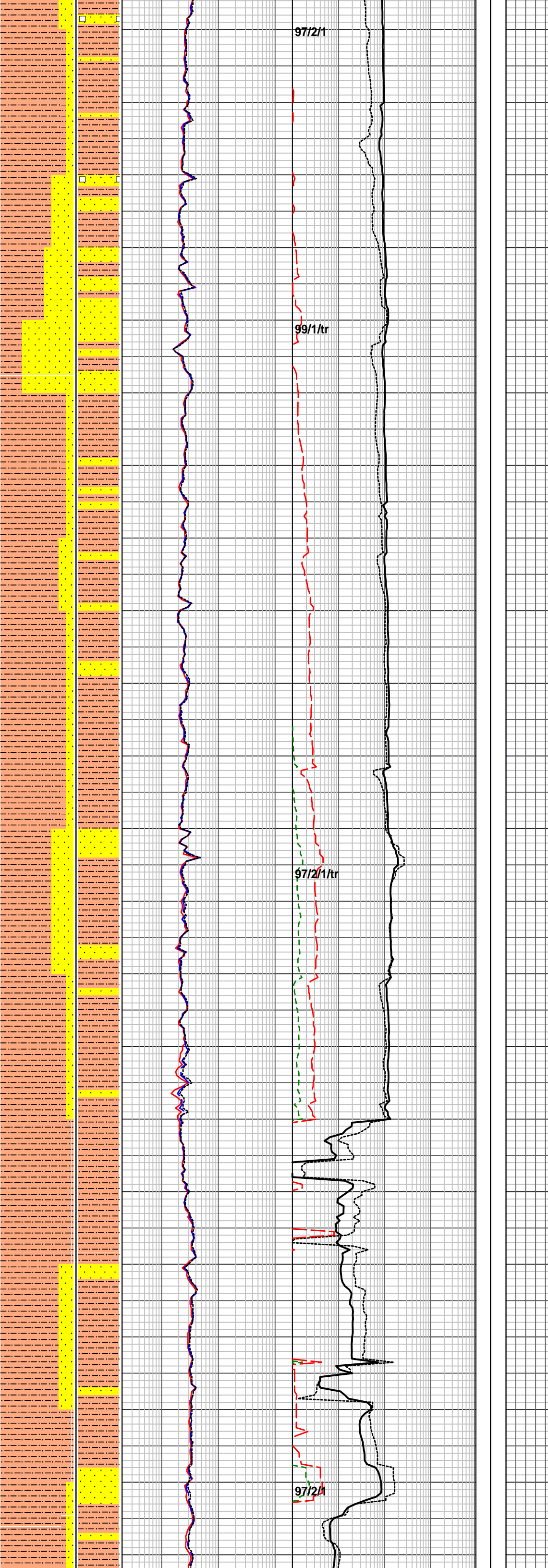
WOB: 14-55klbs
RPM: 75-161
GPM: 804-146
SPP: 2282-4769psi

WOB: 10-40klbs
RPM: 91-156
GPM: 658-1006
SPP: 1725-3485psi

08/09/08



1410
1420
1430
1440
1450
1460
1470
1480
1490
1500
1510
1520
1530
1540
1550
1560
1570
1580
1590
1600
1610
1620



SANDSTONE: lt gy, clr-trnsl, vf-m gr, sbang-sbrndd, mod srt, rr wk sil cmt, mnr lt gy arg mtrx, com nod pyr, tr f gr glauc, fri agg, pred lse, fr inf por, no fluor

SILTSTONE: m brnsh gy, lt gy, occ dk gy, arg, rr nod pyr, com glauc, frm, disp, sblky-blky

Survey at 1460.30m
Inc: 38.67°
Azi: 109.79° TVD: 1393.20m

SANDSTONE: off wh-pl gy, clr trnsl, f-m, mnr crs, mod srt, dom sbang, occ sbrndd, wk sil cmt, mnr off wh arg mtrx, rr glauc grs, lse, rr fri agg, fr inf por, p-fr vis por, no fluor

SILTSTONE: pl-occ m brn, mnr pl gn, com arg, occ-com glauc gr, mnr carb spks, dis-v sft, frm i/p, gen amor, occ sblky-blky

Survey at 1519.61m
Inc: 38.21°
Azi: 109.48° TVD: 1439.90m

SANDSTONE: off wh-pl gy, clr trnsl, f-m, mnr crs, mod srt, dom sbang, occ sbrndd, wk sil cmt, mnr off wh arg mtrx, rr glauc grs, lse, rr fri agg, fr inf por, p-fr vis por, no fluor

SILTSTONE: pl-occ m brn, mnr pl grn, com arg, occ-com glauc gr, mnr carb spks, dis-v sft, frm i/p, gen amor, occ sblky-blky

Bit 4 unable to pass 88m, POOH layout BHA.

Survey at 1577.82m
Inc: 39.48°
Azi: 111.06° TVD: 1485.5m

SANDSTONE: off wh-pl gy, clr-trnsl, f-v crs, pr srt, sbang-sbrndd, wk sil cmt, mnr off wh arg mtrx, mnr pyr nod, lse, fr inf por, no fluor

Ran Carbide @ 1596.00m
Hole In Gauge

MW: 1.32 FV: 89 PV: 34 YP: 58
GELS: 14/29/39 SOL: 11.62
pH: 8.5 Ck: 1 CL: 58000

SILTSTONE: pl-occ m brn, mnr pl grn, com arg, occ glauc gr & carb spks, dis-v sft, frm i/p, amor, sblky-blky

WOB: 11-53klbs
RPM: 98-128
GPM: 730-968
SPP: 2090-3330psi

WOB: 35-55klbs
RPM: 85-135
GPM: 705-955
SPP: 1980-3430psi

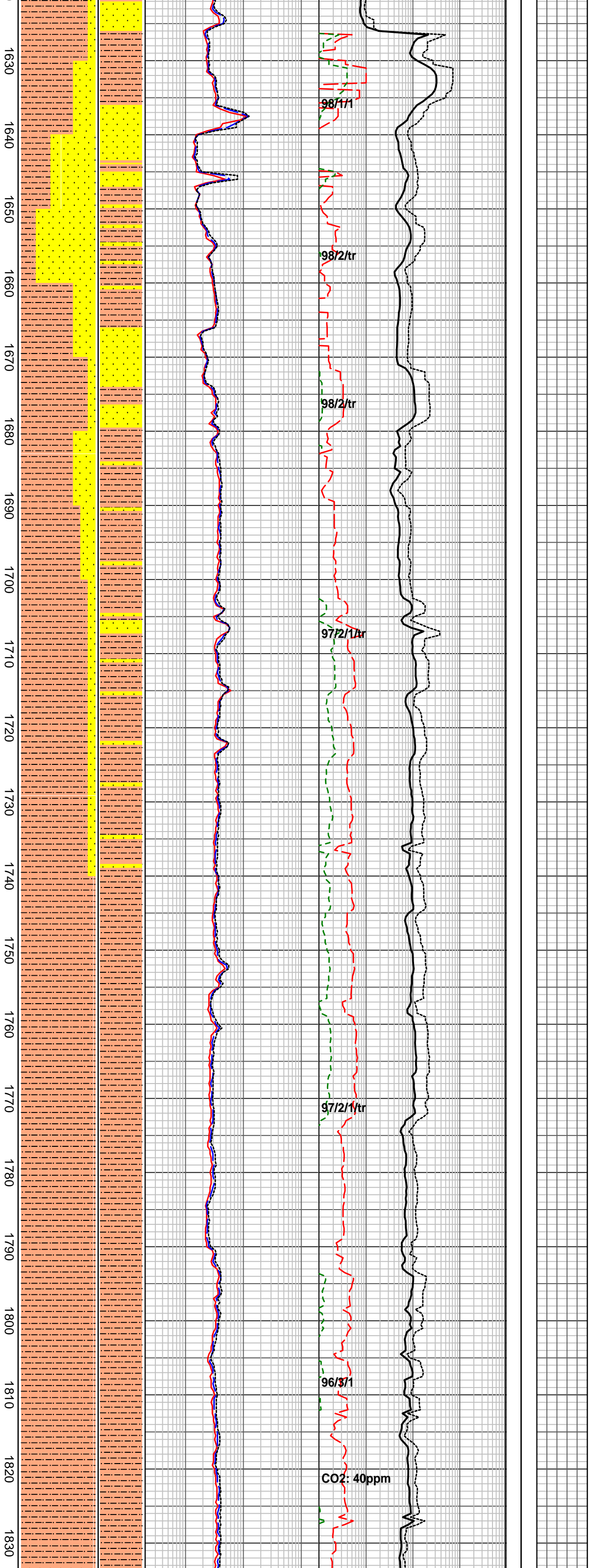
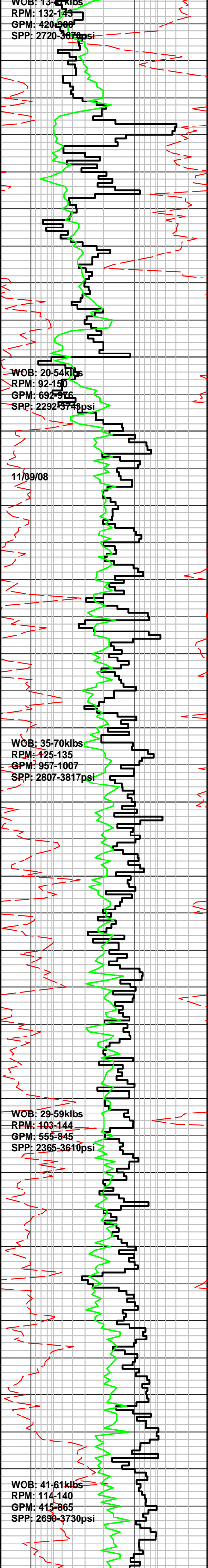
WOB: 30-60klbs
RPM: 85-100
GPM: 850-995
SPP: 2340-3770psi

09/09/08-10/09/08

NB 5 HUGHES MXL-4X
311mm (12-1/4") 1x12.5x20 jets
In: 1560.00m Out: 2042.00m
Drilled 482.00m in 43.2hrs
XXXXXXXXXX

WOB: 10-64klbs
RPM: 41-140
GPM: 600-960
SPP: 2400-3700psi

WOB: 10-64klbs
RPM: 41-140
GPM: 600-960
SPP: 2400-3700psi



Survey at 1634.98m
Inc: 43.80°
Azi: 113.39° TVD: 1528.30m

SANDSTONE: off wh, clr-trnsl, f-occ m, vf i/p, mod srtcd, sbang-sbrnnd, mod calc cmt, com off wh arg mtrx, mnr liths, lse cln grs, fri, pr inf & vis por, no fluor

SANSTONE: off wh, clr-trnsl, f-m, rr crs gr, wl srt, sbang-occ sbrnnd, mod calc cmt, com off wh arg mtrx, occ pyr nod, mnr liths, lse cln gr, fri, pr inf & vis por, mnr dull orng fluor

SILTSTONE: pl-occ m brn, mnr pl grn, com arg, occ glauc gr & carb spks, dis-v sft, frm i/p, amor, sbiky

SANSTONE: off wh, clr-trnsl, f-m, rr crs gr, sbang-occ sbrnnd, mod wl srt, tr wk calc cmt, tr f gr glauc, pred lse f gr qtz, pr inf por, no fluor

Survey at 1720.65m
Inc: 49.49°
Azi: 115.31° TVD: 1587.30m

SANDSTONE: v lt gy-lt gy, wh, clr-trnsl, vf-f gr, sbang-sbrnnd, wl srt, mod calc cmt, rr f gr glauc, rr nod pyr, mod hd agg, v pr vis por, no fluor

Survey at 1751.51m
Inc: 52.16°
Azi: 116.21° TVD: 1606.50m

SILTSTONE: m gy, m brnsh gy, arg, vf aren i/p, tr f gr glauc, frm, disp i/p, blkly

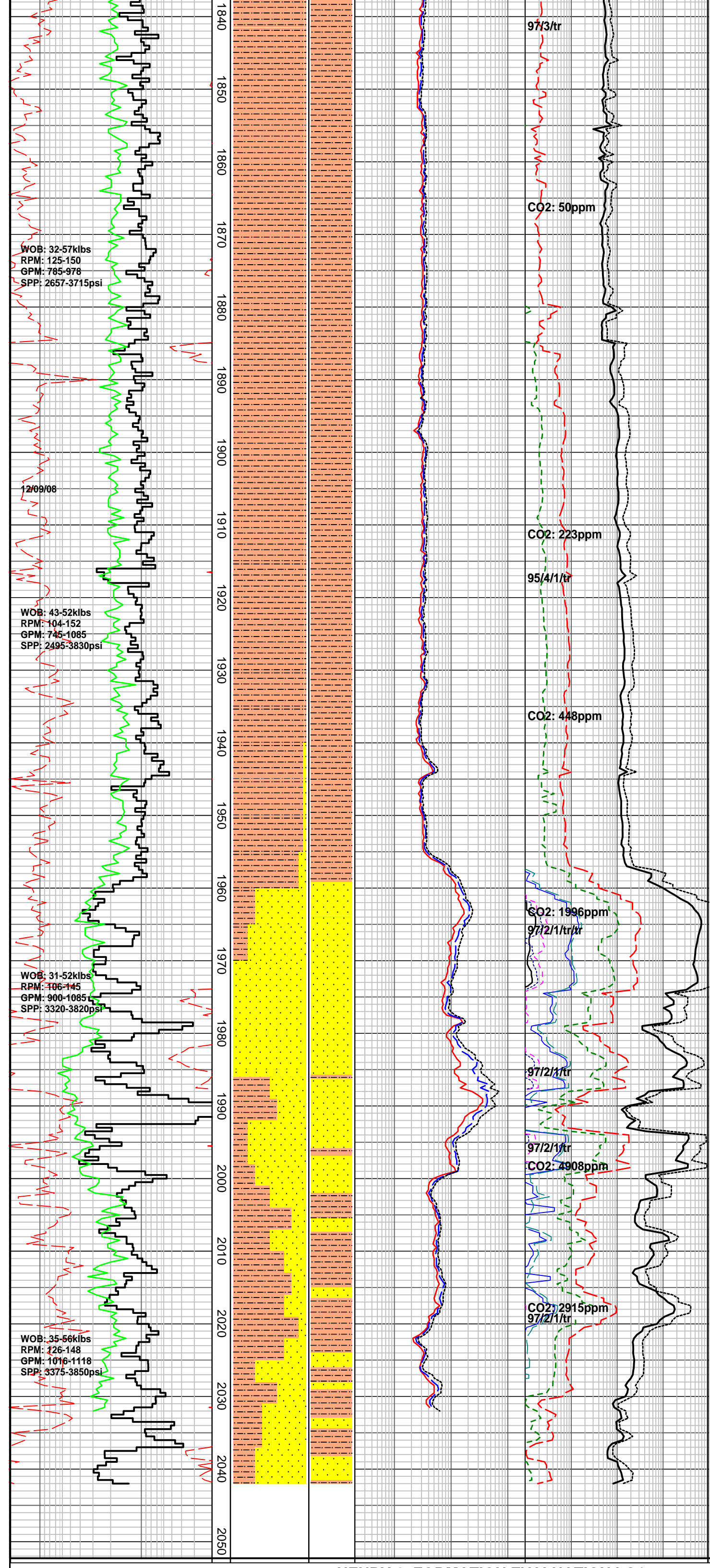
Survey at 1779.21m
Inc: 54.97°
Azi: 116.68° TVD: 1623.20m

SILTSTONE: m gy-m dk gy, m brnsh gy, arg with clay content easily washed from samples, loc vf aren, rr liths, tr glauc, frm, disp i/p, blkly

SILTSTONE: pl brn, pl-m brn gy, gen arg, occ carb spks, mnr glauc grs, mnr micro mic, disp-v sft, frm i/p, amor sbiky

Survey at 1836.56m
Inc: 59.33°
Azi: 117.70° TVD: 1654.10m

SILTSTONE: pl brn, mnr m-dk



WOB: 32-57klbs
RPM: 125-150
GPM: 785-978
SPP: 2657-3715psi

12/09/08

WOB: 43-52klbs
RPM: 104-152
GPM: 745-1085
SPP: 2495-3830psi

WOB: 31-52klbs
RPM: 106-145
GPM: 900-1085
SPP: 3320-3820psi

WOB: 35-56klbs
RPM: 126-148
GPM: 1016-1118
SPP: 3375-3850psi

97/3/tr

CO2: 50ppm

CO2: 223ppm

95/4/1/tr

CO2: 448ppm

CO2: 1996ppm

97/2/1/tr/tr

97/2/1/tr

CO2: 4908ppm

CO2: 2915ppm

97/2/1/tr

brn gy, com arg, occ carb spks, mnr mic mic, disp-v sft, frm i/p, amor, sblky

SILTSTONE: pl brn-occ pl gy, m-dk brn gy, arg, occ carb spks, mnr liths & calc incl, frm-mod hd, disp-v sft, amor, sblky-blky

Survey at 1865.80m
Inc: 59.29°
Azi: 117.83° TVD: 1669.10m

SILTSTONE: m-dk brn gy, pl brn i/p, arg, occ carb spks, mnr calc incl & glauc grs, frm-mod hd, v sft i/p, mnr hd, mnr amor, sblky-sbfiss

MW: 1.32 FV: 62 PV: 31 YP: 47
GELS: 10/21/33 SOL: 10.17
pH: 8.5 Ck: 0.5 CL: 59000

SILTSTONE: m-dk brn gy, pl brn i/p, arg, occ carb spks, mnr calc incl & glauc grs, frm-mod hd, sft i/p, mnr hd, sblky-sbfiss

SILTSTONE: m dk gy, m-dk brnsh gy, arg, tr f carb spks, tr mic mic, rr LST frags, rr glauc, tr nod pyr, mod hd, sblky

Survey at 1952.67m
Inc: 60.05°
Azi: 119.47° TVD: 1712.9m

SANDSTONE: wh, v lt brnsh gy, vf-f gr, wl srt, sbang-sbrndd, mnr wk calc cmt, abdt off wh arg mtrx, tr vf glauc, tr carb spks, v pr vis por, no fluor

Changing Shaker Screen

Survey at 1980.36m
Inc: 59.99°
Azi: 119.22° TVD: 1726.80m

SANDSTONE: off wh, clr-trnsl, f-m, wl srt, sbang-sbrnd, mod calc cmt, com-abdt off wh arg mtrx, occ carb spks, fri, lse grs, fr-gd inf por, fr vis por, no fluor

SANDSTONE: off wh, clr-trnsl, vf-f, mnr m, mod srt, sbang-sbrnd, wk-mod calc cmt, com-abdt off wh arg mtrx, occ lith & carb spks, lse gr, com rck flour, pr vis & inf por, no fluor

Henry-2 reached 311mm (12-1/4") hole section TD @ 2042.00m at 18.00hrs on 12/09/08

HENRY-2 FORMATION EVALUATION LOG

WOB 10 20 30 40 kbf	MD meters 1:500	LITHOLOGY %	INTERPRETED LITHOLOGY	RESISTIVITY Resistivity (shallow) 2 20 200 ohm.m	CHROMATOGRAPH Total Gas 1 10 100 1000 unit	CUT FLUORESCENCE	CALC Calcite 0 100
ROP 200 20 m/hr				Resistivity (medium) 2 20 200 ohm.m	Methane		Dolomite 100 0
Gamma 50 100 150 200 API				Resistivity (deep) 2 20 200 ohm.m	Ethane Propane i-Butane n-Butane i-Pentane n-Pentane		PFG PFG
					100 1000 10000 100000 ppm		
							REMARKS